

Res # 1086  
Dodd St.

Date Installed: 11-8-04  
Installed by: Gleason Const.  
Inspected by: Rex Moil

Porch

6" SDR for  
plug for use  
future F.L.  
1' Deep F.L.

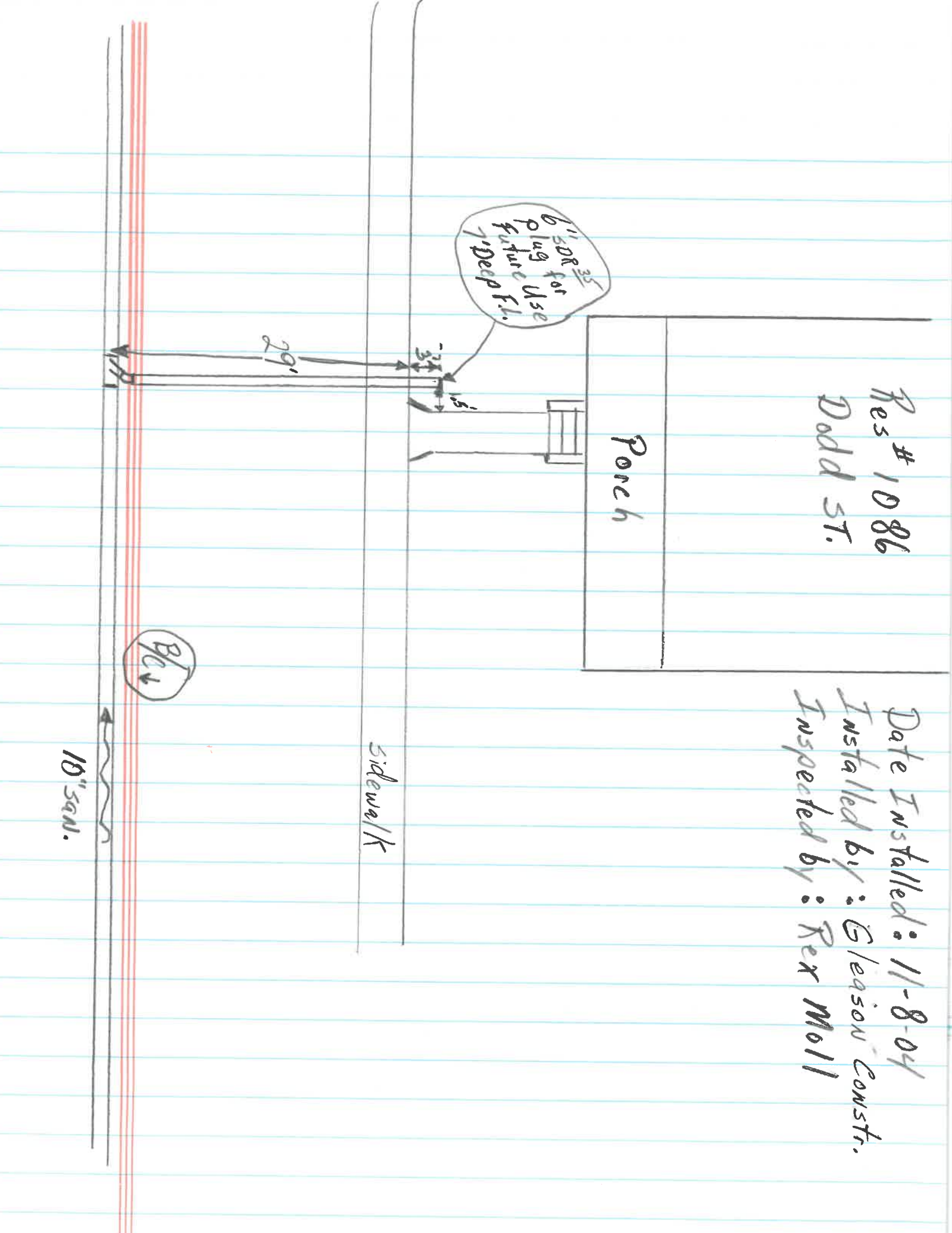
29'

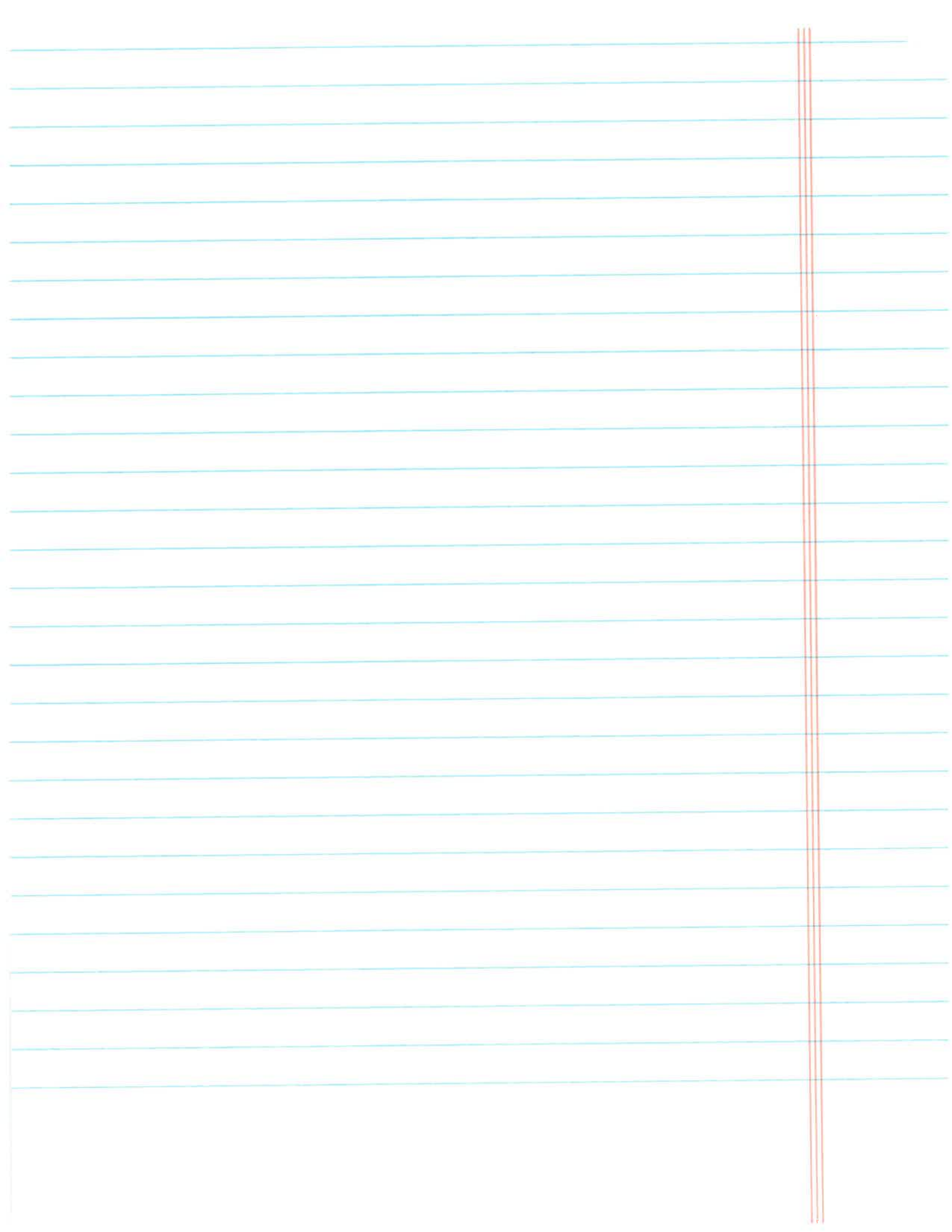
3 1/2"  
1 1/2"

Sidewalk

Back

18" SAN.





Date Installed: 11-8-04  
Installed by: Gleason Constr.  
Inspected by: Rex Moll

Res # 1086  
Dodd St.

Porch

35"  
6" SDR for  
plug Use  
Future F.L.  
7" Deep

Sidewalk

BC ↓

10" SAN.

